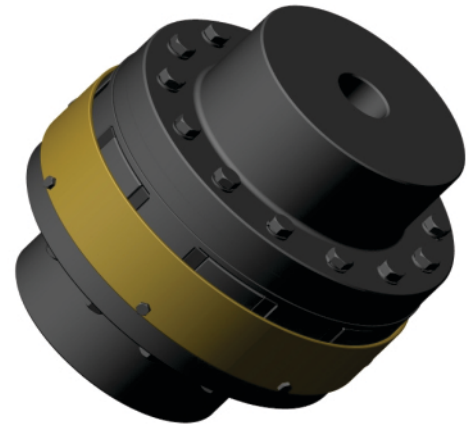
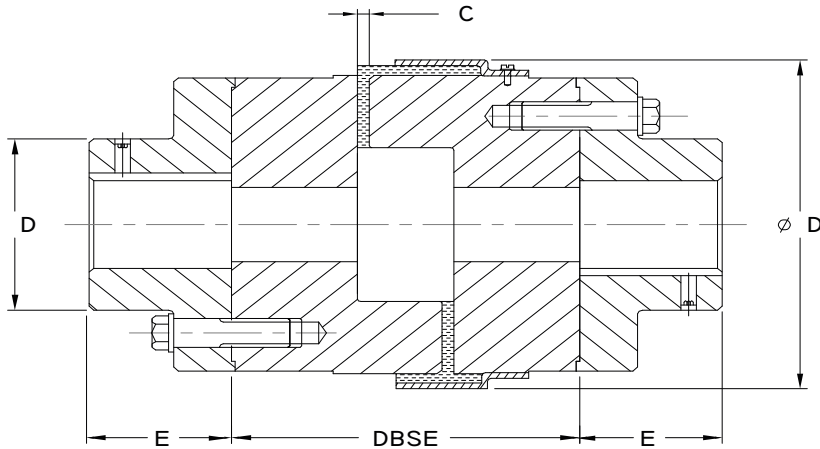


# TYPE : UHS COUPLINGS



UHS TYPE COUPLING

## TECHNICAL DATA

Coupling size	Rated Torque Nm	kW at 100 rpm	Max.Speed rpm	DBSE	Bore		Out Side Diameter $\phi$ A	Length Thru Bore E	Adaptor Diameter $\phi$ D
					Min.	Max.			
3067	3507	55.9	2200	140,180	45	100	266	80	167
3567	7124	74.6	2000		50	107	293	90	183
3667	9903	104	1800	180,250	55	125	317	100	209
4067	14228	149	1700		65	140	349	110	231
4567	19195	201	1500		70	165	400	120	288
5069	22822	239	1450		90	175	412	135	298
6069	33518	351	1300		100	210	461	150	360
7069	46982	492	1100	250	100	240	524	170	425

- \* All diemensions are in mm
- \* Rating based on S.F. = 1
- \* Maintain gap C = 3 mm for uhs 3067 to uhs 4567 dr6 mm.for higher size at the time of assembly.

MANUFACTURED BY

**UTKUR IRON & STEEL INDUSTRIES**

Plot No. L-51, Additional M.I.D.C., Satara - 415 004. (INDIA)  
Ph.: +91 2162 240574, 240974 Fax : + 91 2162 240174

E-mail : sales@utkur.com  
website : www.utkur.com

ISSUE - 11 / May 2013



DEALER