

EXTREME FITNESS EXCELLENT PERFORMANCE



Pressure Gauges



Temperature Gauges



Digital Instruments



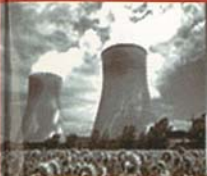
Sensors



Flow



Accessories



Power



Petrochemical



Automobile



Paper



Water Treatment



Food & Beverages



Pharmaceutical



ALOT HITEK PVT. LTD.
An ISO 9001 : 2000 CO.



The Company

The Company



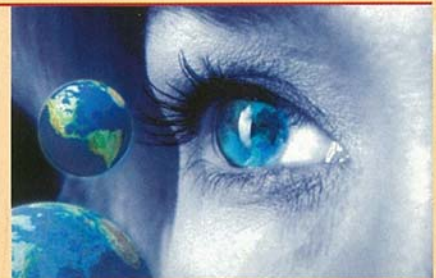
"ALOT" has valuable experience in Pressure, Temperature and Flow industry, mastering the art of manufacturing various products from a varied range of raw materials, and catering to the global market for over two decades, with excellent quality at its USP & state-of-the-art technology at the helm of its activities.

Vision

Our aim is to grow along with the growing Indian economy. At the foundation of this growth are stringent quality norms, timely delivery, flexibility and excellent client relations, with complete customer satisfaction as the goal.

Quality

Being an ISO certified company **ALOT** follows stringent quality norms by maintaining high quality raw materials, periodic in-process inspections and itemized reporting.



Service

With customer satisfaction as the goal **ALOT** must cater to growing customer demands. Due to our appreciable developing capabilities, we have established a good rapport with our clients and have gained a reputation of being an excellent service provider.

Contents

	Utility (Commercial) Pressure Gauges (PGU)	1
	Stainless Steel Pressure Gauges (PGW)	2
	Stainless Steel Case Glycerine Filled Gauges (PGS)	3
	Diaphragm Pressure Gauges (PGD)	4
	Differential Pressure Gauge (DPG)	5
	Test & Master Gauges (PGT)	6
	Dial Thermometer - Pyrometer (TG)	7
	Sensors, Thermocouple & RTD'S (SN)	8
	Digital Temperature Instruments (DI)	9
	Sequence Controller / Monitor / Transformer (DIFI)	10
	Flow Meter / Rotameter / Manometer (FM)	11
	Accessories (AS)	12



S

t

m

e

t

m

o

C

Utility (Commercial) Pressure Gauges - PGU

"ALOT" Utility pressure gauges are designed for the measurement of pressure & vacuum for all clean non-viscous liquid and gaseous media

VERSION

DIAL SIZE	: Ø 40mm - 50mm - 63mm - 75mm - 100mm - 150mm - 250mm
RANGE	: 0....1 to 0....1000 kg/cm ² with PSI, BAR / PSI, Single Scale Kg/cm ² / BAR, MMWC, Feet of Water, In. of Hg, Kilopascal Pressure / Vacuum / Compound, Freon, Ammonia, Gaseous PERTUCULAR RANGE AVAILABLE PERTICULAR SIZE
DIAL	: Aluminium Black Graduation on White Background
ENTRY	: Bottom - Direct / Surface / Back / Back with Panel {BCPM}
ACCURACY	: ± 2.5% of FSD, Ø 40mm, 50mm ± 1.6% of FSD, Ø 63mm, 75mm, 100mm, 150mm, 250mm
AMBIENT TEMP.	: -20°C to +60°C
OPERATING PROCESS TEMP.	: Soldering: -20°C to +80°C / Brazing: -30°C to +120°C
OPERATING PRESSURE	: 25% to 75% of FSD
OVER PRESSURE	: Full Scale Value
CASE & BEZAL (RING)	: Steel Seimens Gray Finish Powder Coated
BOURDON TUBE MOC/SHAPE	: Brass < 70 Kg/Cm ² in 'C' S.S. 316 > 70 Kg/Cm ² in Helicoil
MOVEMENT	: Brass
SOCKET MATERIAL	: Brass / AISI S.S. 304 / S.S. 316 for Ammonia
CONNECTION	: 1/8" BSP 40mm - 50mm / 1/4" BSP 63mm 3/8" BSP 100mm - 150mm / 1/2" BSP 250mm
POINTER	: Black Coloured Aluminium Pointer
WINDOW	: Plain Glass / Plexi Glass
JOINTS	: Soldering < 70 Kg/Cm ² , Brazing > 70 Kg/Cm ²

OPTIONS

CONNECTION	: 1/4" BSP / NPT Ø 40mm - 50mm - 63mm 1/2" BSP / NPT Ø 100mm - 150mm - 250mm
DIAL	: Customised
CERTIFICATE	: TEST & CALIBRATION CERTIFICATE

APPLICATION :

Petro Chemical, Oil Exploration, Fertilizer Industry, Pharmaceutical, Production Papermills, Power Generation, Hydraulic, Food and Beverage Industry, Water Treatment Plant, Offshore, Ship Building etc.



Stainless Steel Pressure Gauges - PGW

"ALOT" Weather proof construction & complete S.S. wetted & external parts, make these gauges ideally suited for all kinds of process industries & OEM.s

WEATHER PROOF VERSION

DIAL SIZE RANGE	: \varnothing 40mm - 50mm - 63mm - 75mm - 100mm - 150mm - 250mm : 0....1 to 0....1000 kg/cm ² with PSI, BAR / PSI, Single Scale Kg/cm ² / BAR, MMWC, Feet of Water, In. of Hg, Kilopascal Pressure / Vacuum / Compound, Freon, Ammonia, Gaseous
DIAL ENTRY	: Aluminium, Black Graduation on White Background : Bottom - Direct / Surface, Center / Essentric Back with Clamp, Back with Panel Flange {BCPM}
ACCURACY	: \pm 1.0% of FSD
AMBIENT TEMP.	: - 25°C to 65°C
PROCESS TEMP.	: Maximum 270°C / Maximum 400°C (With S.S. 316L Internals)
OPERATING PRESSURE	: Maximum 75% of the Full Scale Value
OVER PRESSURE LIMIT	: Full Scale Value : 30% for Pressure Range < 60 Kg/Cm ² : 25% for Pressure Range = 100Kg/Cm ² : 15% for Pressure Range > 100Kg/Cm ²
PROTECTION CASE & BEZAL	: IP 65 / IP 55 : S.S. 304 Bayonet Type
BOURDON TUBE MOC/SHAPE	: S.S. 316/Monel 400 (<70 Kg/Cm ² in .C., >70 Kg/Cm ² in Helicoil)
MOVEMENT	: S.S. 304
SOCKET CONNECTION	: S.S. 316L / Monel 400 : 1/8" BSP - 40mm, 50mm / 1/4", 1/8" BSP/ NPT - 63mm : 3/8" BSP, 1/2" BSP / NPT-100, 150mm / 1/2" BSP / NPT-250mm
POINTER WINDOW	: Aluminium, Black Coloured Micrometer Zero Adjustable : Toughened Glass / Shutter Proof Glass / Plexi Glass
GASKET	: EPDM
BLOW OF DISC	: EPDM
JOINTS	: TIG Argon Arc Welding
CERTIFICATE	: TEST & CALIBRATION CERTIFICATE

OPTIONS

VERSION	: Dry but Fillable
MOUNTING	: Bottom with Surface Mounting \varnothing 63, 100, 150mm
CONNECTION TAG	: 1/4" BSP/NPT \varnothing 40, 50, 63mm & 1/2" BSP/NPT \varnothing 100, 150, 250mm : Aluminium / S.S. 304

FILLED VERSION

ACCURACY	: \pm 1.6% of FSD
PROCESS TEMP	: Maximum 65°C
FILLING PLUG	: EPDM
DAMPING LIQUID	: Glycerine
OTHER FEATURES	: Same as Dry Version

APPLICATION :

Petro Chemical, Oil Exploration, Fertilizer Industry, Pharmaceutical, Production Papermills, Power Generation, Hydraulic, Food and Beverage Industry, Water Treatment Plant, Offshore, Ship Building etc.



www.alothitek.com



Stainless Steel Pressure Gauges

Stainless Steel Case Glycerine Filled Gauges - PGS

"ALOT" S.S. Gauges are suitable for gaseous and liquid also for corrosive environment. Liquid filling version for adverse service conditions where pulsation or vibration exists.

FILLABLE VERSION

DIAL SIZE	: Ø 50mm - 63mm -100mm -150mm
RANGE	: 0....1 to 0....1000 kg/cm ² With PSI, BAR / PSI, Single Scale Kg/cm ² / BAR, MMWC, Feet of Water, In. of Hg, Kilopascal PERTUCULAR RANGE AVAILABLE PERTICULAR SIZE
DIAL	: Aluminium, Black Graduation on White Background
ENTRY	: Bottom - Direct / Surface, Center / Essentric Back with Clamp, Back with Panel Flange {BCPM}
ACCURACY	: ± 1.6% FSD
AMBIENT TEMP.	: - 25°C to 65°C
PROCESS TEMP	: Maximum 65°C
OPERATING PRESSURE	: Maximum 75% of the Full Scale Value
OVER PRESSURE LIMIT	: Full Scale Value 30% for Pressure Range<60 Kg/cm ² 25% for Pressure Range=100Kg/cm ² 15% for Pressure Range>100Kg/cm ²
PROTECTION	: IP 65 / IP 55
CASE & BEZAL	: S.S. 304 Machine Seald Crimped / Snap Action Bayonet Type
BOURDON TUBE MOC/SHAPE	: Brass <70 Kg/Cm ² in 'C' , S.S. 316 >70 Kg/Cm ² in Helicoil
MOVEMENT	: Brass / S.S. 304
SOCKET MATERIAL	: Brass / S.S. 316L
CONNECTION	: 1/8" BSP Ø 50mm / 1/4" BSP 63mm 3/8" BSP Ø 100mm, 150mm
PRESSURE RELIEF	: Top of the Case
POINTER	: Aluminum, Black Coloured Fix
WINDOW	: Plexi Glass
GASKET / FILLING PLUG	: EPDM
JOINTS	: Brazing in Brass / Argon Arc Welding in S.S.
FILLING	: GLYCERINE
CERTIFICATE	: TEST & CALIBRATION CERTIFICATE
OPTIONS	
VERSION	: Dry but Fillable
MOUNTING	: Bottom with Surface Mounting Ø 63mm, 100mm, 150 mm
CONNECTION	: 1/8" BSP, 1/4" NPT Ø 63mm, 100mm 1/2" BSP/ NPT Ø 100mm, 150mm
WINDOW	: Shutter Proof Glass / Toughened Glass
DIAL	: Customized
TAG	: Aluminium / S.S. 304
BLOW OF DISC	: EPDM

APPLICATION :

Petro Chemical, Oil Exploration, Fertilizer Industry, Pharmaceutical, Production Papermills, Power Generation, Hydraulic, Food and Beverage Industry, Water Treatment Plant, Offshore, Ship Building etc.



Diaphragm Pressure Gauges - PGD

"ALOT" Diaphragm pressure gauges are low-cost alternative to the conventional system of a separate chemical seal and pressure gauges. Suitable for corrosive, viscous and S.S. crystallising media. Diaphragm pressure gauges reduced sensitivity to shock and vibration and reduced temperature effects.

VERSION

DIAL SIZE	: Ø 63mm - 100mm - 150mm
RANGE	: Pressure, Vacuum, Compound, MMWC
DIAL	: Aluminium, Black Graduation on White Background
ENTRY	: Direct Bottom / Back / Capillary:- S.S. / S.S. Armour
ACCURACY	: ± 1.6 % FSD
AMBIENT TEMP	: -25°C to + 65°C
PROCESS TEMP	: Max 120°C
TEMP. LIMIT	: 270°C
CASE & BAZEL	: S.S. 304 Bayonet Type
PROTECTION	: IP 65
WETTED PART	: S.S. 316, Specific Alloys for Specific Application on Request
TOP CHAMBER	: S.S. 304
BOTTOM CHAMBER	: S.S. 316L, Specific Alloys for Specific Application on Request
NUT & BOLT	: S.S. 304
SENSING ELEMENT	: S.S. 316L / Hastelloy / Tantalum / Monel 400 Specific Alloys for Specific Application on Request
DIAPHRAGM COATING	: No Coating / PTFE/ PTFE Lining / Silver / Gold
CONNECTION	: Threaded, Flanged, Sealed for Sanitary & Chemical
BOTTOM CHAMBER COATING	: No Coating / PTFE / PTFE Lining / Silver / Gold Specific Coating for Specific Application on Request
SEALLING FLUID	: Silicon Oil, Glycerine, Vegetable Oil
POINTER	: Zero Adjustable / Micrometer Zero Adjustable
WINDOW	: Toughened Glass / Shatterproof Glass
GASKET	: EPDM
BLOW OF DISC	: EPDM
JOINTS	: Argon Arc Welding
TAG	: Aluminium / S.S. 304
CERTIFICATE	: TEST & CALIBRATION CERTIFICATE

FILLED VERSION

ACCURACY	: ± 1.6% of FSD
AMBIENT TEMP.	: Maximum 65°C
PROCESS TEMP.	: Maximum 65°C
FILLING PLUG	: EPDM
WINDOW	: Plexi Glass / Toughened Glass / Shutter Proof Glass
DAMPING LIQUID	: Glycerine
OTHER FEATURES	: Same as Dry Version

APPLICATION :

Petro Chemical, Pharmaceutical, Oil Exploration & Production Papermills, Power Generation, Food and Beverage Industry, Water Treatment Plant, Offshore & Ship Building Industries.



www.alothitek.com

Differential Pressure Gauges - DPG

"ALOT" S.S. Diaphragm differential gauges has a diaphragm and one pointer to read the differential pressure. The Variation in high static pressure makes this gauges suitable for almost all differential measurements & corrosive, environment, contaminated and viscous gaseous or liquid media

VERSION

DIAL SIZE	: Ø 100mm - 150mm
RANGE	: Pressure, Vacuum, Compound, MMWC
ENTRY	: Direct Bottom / Back
ACCURACY	: ± 2.5% of F.S.D
DIAL	: Aluminium, Black Graduation on White Background
MAX. STATIC PRESSURE	: 60 Kg/Cm ² / 100Kg/Cm ² (Optional)
AMBIENT TEMP	: -20°C to +60°C
PROCESS TEMP	: Max 100°C
TEMP. LIMIT	: 270°C
CASE & BAZEL	: AISI S.S. 304, Bazel Bayonet Type
INTERNAL	: AISI S.S. 316
CONNECTIONS	: 1/4. NPT (F) 2 Entry
TOP CHAMBER	: AISI S.S. 304
MOVEMENT	: AISI S.S. 304
DIAPHRAGM	: AISI S.S. 316L with Double Diaphragm IN OPTION Hastelloy, Monel
JOINTS	: Argon Arc Welding
NUTS & BOLTS	: AISI S.S. 304
POINTER	: Aluminium, Black Coloured, Micrometer Zero Adjustable
WINDOW	: Toughened Glass
CASE GASKET / FILLING PLUG	: EPDM
DIAPHRAGM SEALING GASKET	: EPDM
TEMPERATURE ERROR	: When temperature change from reference temperature of 20°C (+/- 0.6%) Temp rising or falling 10°C of true scale value
DIAPHRAGM PROTECTION	: Teflon Coating (Optional)
CERTIFICATE	: TEST & CALIBRATION CERTIFICATE

OPTIONS

TYPE	: Diaphragm / Bourdon Tube
WINDOW	: Shutter Proof Glass / Safety Glass / Plexi Glass
SERVICE	: Oxygen Service
FILLING	: Glycerine / Silicon Oil
TAG	: Aluminium / S.S. 304

APPLICATION:

Chemicals, Refinery, Fertilizer, Pharmaceutical, Power, Cement, Pulp & Paper, Offshore, Ship Building



Test & Master Gauges - PGT

"ALOT" Test & Master Gauges are designed for testing & calibration of general service gauges. Suitable for all gaseous and liquid media that will not obstruct the pressure system or attack copper alloy part.

VERSION

DIAL SIZE	: Ø 150mm - 250mm
RANGE	: Pressure, Vacuum, Compound
ACCURACY	: $\pm 0.25\%$ / $\pm 0.5\%$ of F.S.D. As Per ANSI
DIAL	: Aluminium Black Graduation on White Background, Anti Parallax Mirror Scale
MOUNTING	: Direct Bottom Entry
AMBIENT TEMP.	: - 25°C to +65°C
PROCESS TEMP	: Maximum 85°C (With S.S. 316L Internals)
OPERATING PRESSURE	: Maximum 75% of the Full Scale Value
OVER PRESSURE LIMIT	: Full Scale Value : 30% for Pressure Range <60 Kg/Cm ² : 25% for Pressure Range =100Kg/Cm ² : 15% for Pressure Range >100Kg/Cm ²
PROTECTION	: IP 65 / IP 55
CASE & BEZEL	: S.S. 304 Snap Action Bayonet Type
BOURDON	: S.S. 316L for $\pm 0.5\%$ / Beryllium Copper for $\pm 0.25\%$
MOVEMENT	: S.S. 304 for $\pm 0.5\%$ / Jewelled Bearing for $\pm 0.25\%$
SOCKET	: S.S. 316L
CONNECTION	: 1/2" BSP / NPT (M) Options: 1/4" BSP / NPT, 3/8" BSP
POINTER	: Knife Edged, Micrometer Zero Adjustable Type
POINTER STOPPER	: Spring Type
JOINTS	: Silver Brazed / Argon Arc Welded
GASKET	: Neoprene
WINDOW	: Toughened Glass / Shatterproof / Glass
TAG	: Aluminium / S.S. 304
CERTIFICATE	: TEST & CALIBRATION CERTIFICATE

APPLICATION:

Calibration & Testing Laboratories.



Test and Master Gauges



Dial Thermometer - Pyrometer

Dial Thermometer (Pyrometer) - TG

"ALOT" All Stainless Steel Thermometer specifically designed to meet requirement of process Industries. This Instruments meet the highest standards of measurement technique.

MERCURY / GAS VERSION

TYPE	: Stem / Every Angle / Anti Vibration Stem / Capillary - S.S. / Armour
DIAL SIZE	: Ø 100mm - 150mm - 250mm
RANGE	: 0 - 50, 100, 120, 150, 160, 200, 250, 300, 400, 500, 600, 650°C : -38 +50, -20 +60, -20 +80, -30 +70, -30 +120°C Degree Centigrade °C, Degree Ferenite °F
DIAL ENTRY	: Aluminium, Black Graduations on White Background : Bottom - Direct / Surface, Center / Essentric Back / Back with Panel Flange (BCPM)
ACCURACY	: ± 1% FSD
AMBIENT TEMPERATURE	: - 25°C to 65°C
OPERATING PRESSURE	: 15 Kg/cm ²
PROCESS TEMP	: As Per Range
PROTECTION	: IP 65
CASE & BEZEL	: S.S. 304 Bayonet Type
MOVEMENT	: S.S. 304
BOURDON	: S.S. 316
STEM & BULB	: S.S. 316
STEM DIA	: 10 mm Standard, Options: 6 mm, 8 mm, 9.5 mm, 12 mm
BULB DIA	: 10 mm Standard, Options: 6 mm, 8 mm, 9.5 mm, 12 mm
IMMERSION LENGTH	: 300 mm / Options : As Required
CAPILLARY LENGTH	: 3mtrs / Options: MAX 25mtrs
CAPILLARY MATERIAL	: S.S. 304, S.S. 304 Armour / S.S. 304 with PVC Covering - Option: S.S. 316
CONNECTION	: S.S. 304 1/2" BSP (M) Adjustable - Option: S.S. 316 Options: 1/2" / 3/4" BSP/NPT Adjustable / Fix
POINTER	: Micrometer Zero Adjustable
WINDOW	: Glass / Toughened / Options : Shatter Proof Glass / Plexi Glass
GASKET	: EPDM
JOINT	: Argon Arc. Welding
CASE COMPENSATION	: Bimetalic Compensator
OPTIONS	: Glycerine Filled and Electrical Contact 1AMP, 230 VAC
TAG	: Aluminium / S.S. 304
CERTIFICATE	: TEST & CALIBRATION CERTIFICATE

BI-METAL VERSION

TYPE	: Stem / Every Angle
DIAL SIZE	: Ø 63mm -100mm -150mm
ENTRY	: Back, Bottom
CONNECTION	: Fixed / Adjustable
OTHER FEATURES	: Same as Mercury / Gas Version

APPLICATION :

Petro Chemical Pharmaceutical Oil Exploration & Production Papermills, Power Generation, Food and Beverage Industry, Water Treatment Plant, Offshore & Ship Building Industries.



Sensors, Thermocouple & RTD'S - SN

"ALOT" Sensors are suitable to measure the exact temperature and pressure of different types of parameters

VERSION

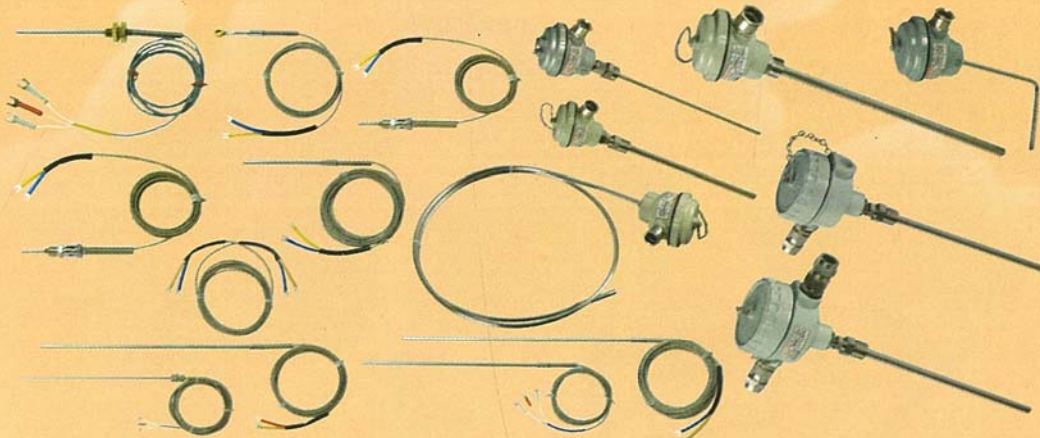
TYPE	: PT-100, P.T - 500/Fe/k (J)/CR/AL (K)/Pt-Pt-Rh 10% (S)/13% (R)
TEMP. RANGE	: -200 to +200 / 300°C / 550°C / 0 - 600°C / 0 - 1200°C / 0 - 1600°C
ASSEMBLY TYPE	: HEAD, PENCIL, NIP, OPEN, BAYONET, WAYSHER, FLANGE MOUNTED BOW, POT SEAL, RIGHT / LEFT ANGLE CONNECTION, QUICK RELEASE CONNECTORS,
NO. OF ELEMENT CONFIGURATION	: Simplex / Duplex : 2 / 3 / 4 / 6 Wire
SHEETH DIA.	: PT-100 / J / K-6mm, K-10mm, R & S-25mm
IMMERSION LENGTH	: 50 - 75 - 100 - 150 - 200 - 250 - 300mm std.
CONNECTION	: Fix / Adj / Sperul / Flange / Sanatary
SHEETH MATERIAL	: S.S. 316 / 304 / 310, Inconel 600, Recrystlised Alumina (KER 710)
SEAT COATING	: Teflon
INSULATION	: Compacted mgo/Ceramic Beets
TERMINAL	: Nickle Plated Spring Loaded Brass with Ceramic Base & S.S. Base Plate.
CABLE ENTRY	: Weather Proof One (One Simplex / Two Duplex of Flame Proof Head)
ENTRY SIZE	: 3/4" ET (F)
ACCURACY	: $\pm 1\%$, ($\pm 1^{\circ}\text{C}$, $\pm 0.5^{\circ}\text{C}$ RTD)
WIRE	: S.S. Braided Cable / PTFE Insulated Cables Available

OPTION

HEAD	: Weather Proof IP 65 as per IS 2148, Flame Proof for Gas I, II A and II B as per IS 2148
CONNECTION	: 1/2. BSP / NPT Fixed or Adjustable, Flange Mounting, Tryclover end or other as specified
STEM	: Rigid Stem Type / Mineral Insulated (M.I.)
SEAT DIA.	: Rigid Stem - 3mm, 4.5mm, 8mm, 10mm, 12mm : Mineral Insulated (M.I.) - 1.5mm, 3mm, 4.5mm, 6mm
IMMERSION LENGTH	: As per Requirement
WIRE	: Teflon / Teflon, Teflon / Teflon / S.S. Braided : Fiber / Fiber, Fiber / Fiber / S.S. Braided

APPLICATION:

Refineries, Chemical, Oil, Plastic, Gas, Pharmaceutical, Shipping, Packaging, Paper and Many More



www.alothitek.com

Digital Temperature Instruments - DI

"ALOT" Temperature Instruments

A) Digital Temperature Indicator & Scanners are suitable for measuring highly precise temperature of single / various stage of heat and cool process.

B) Flame proof for use in hazardous area of Gas Group I, II A, II B, as per IS 2148. And also suitable for the places where inflammable Gases / Liquide are used.

VERSION

MODEL	: INDICATOR	: 1) DTI - 103 Single Channel 2) DTI - 10 M for Multi Channel Rotary Switch 3) DTI - 13S08 / 13S12 / 13S16 Multi Point Auto / Manual Scanner
	: CONTROLLER	: 1) DTC - 201 - Potentiometer Single Set Point 2) DTC - 202 - Potentiometer Two Set Point 3) DTC - 301 - Thumbwheel Single Set Point 4) DTC - 302 - Thumbwheel Two set Point
RANGE	: "RTD" (Pt-100)	-100.0°C to 199.9°C (Resolution 0.1°C) 0°C to 400°C (Resolution 1°C) "J" (Fe/k) 0°C to 600°C (Resolution 1°C) "K" (Cr/Al) 0°C to 1200°C (Resolution 1°C) "S" (Pt-Pt-10% Rh) 1000°C to 1600°C (Resolution 1°C) "R" (Pt-Pt-13% Rh) 1000°C to 1600°C (Resolution 1°C)
ACCURACY	: ± 1% of FSD	
DISPLAY	: 3 1/2 Digit 0.5" LED Red	- Range upto 1600°C
INPUT	: For Thermocouples Type J,K,R,S & T	
	: For RTD (PT - 100) / 4 - 20 mA	
OUTPUT	: 1/2 C/O 6A/2A Rated at 230 VAC	50 c/s
C.J.C	: Automatic For Thermocouples	
RESOLUTION	: 0.1°C for up to +199.9°C & 1°C for above	
SUPPLY	: 230 VAC +10% at 50 c/s.	
SETTING	: POTENTIOMETER : DTC - 201 / 202	
	: THUMBWHEEL SWITCH : DTC - 301 / 302	
CASE	: PVC, White Colour.	

SIZE MODEL

a) 96 X 96 X 110 mm	: DTI - 103, DTI - 10M, DTC - 201, DTC - 202, DTC - 301, DTC - 302
b) 72 x 72 x 110 mm	: DTI - 103, DTC - 201, DTC - 301
c) 48 x 96 x 110 mm	: DTI - 103, DTC - 201, DTC - 301
d) 48 x 72 x 110 mm	: DTI - 103
e) 96 x 192 x 150 mm	: DTI - 103, DTI - 10M, DTC - 202, DTC - 302, DTI - 13S08/12/16

MULTI POINT

SELECTION	: Rotary Switch
CHANNEL	: 6 Channel
SIZE	: 96 x 96 x 110 mm
CHANNEL	: 12 Channel
SIZE	: 96 x 192 x 150 mm

FLAMEPROOF VERSION

MODEL	: INDICATOR - AFI - 1 W / CONTROLLER - AFC - 1 / SCANNER - AFS - 04
ENCLOSURE MATERIAL	: Die cast AL ALLOY LM 6
DEGREE OF PROTECTION	: IP 55 As Per IS 2147
GAS GROUP	: I, II A & II B As per I.S 2148
ENCLOSURE CERTIFICATION	: Certified by C.M.R.S. DHANBAD

Other Products:- Digital Timer, Counter, AC/DC Ampere/Volt Meter, Single/Three Phase Preventor.

APPLICATION:

Petro Chemicals, Fertilizers Industries, Pharmaceutical, Rubber, Plastic, Oven and Furnace Industries



Sequence Controller / Monitor / Transformer - DIFI

"ALOT" sequence controller are used for automatic control and monitor oil fire boiler and ovens. Flame failure monitor are used for control and monitor gas fire furnace, boiler and ovens. Its indicates the firing situation and control safely with alarm output.

SEQUENCE CONTROLLER (FOR OIL FIRE)

MODEL	: BSC-702
SENSOR	: LDR
SENSITIVITY	: Adjs. From Front Faceia
OUTPUT	: 2 Amp. Contact Rating at 230 V Ac 50 c/s.
SUPPLY	: 230 V AC 50 c/s.
MOUNTING	: Wall Mounting

FLAME FAILURE MONITOR (FOR GAS FIRE)

MODEL	: FFM - 701
SENSOR	: Sensing Electrode
SUPPLY	: 230 V AC 50 c/s.
SIZE	: 96 x 96 x 110
MOUNTING	: Surface Mounting / Panel Mounting

ELECTRONIC IGNITION TRANSFORMER

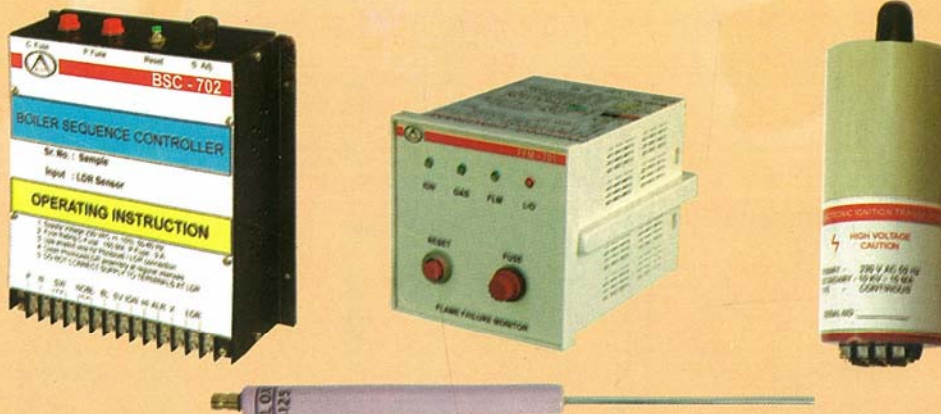
SUPPLY	: 230/110 VAC 50 c/s.
PRIMARY CURRENT	: 1.4 Amps
SECONDARY	: 10.6 KV

IGNITION ELECTRODE

This Electrode are used to generate ignition to blow the burner and also to sense the flame for gas fire.

APPLICATION :

Oven, Furnace, Boiler, Powder Coating, Bakeries & Hotel Industries



www.alothitek.com



Sequence Controller / Monitor / Transformer

Flow Meter / Rotameter / Manometer - FM

"ALOT" Flow Meter, Rotameter and Manometer are Suitable for inline installation with flanged or screwed connections. With several options of materials for the wetted parts. Bye Pass Rotameters are suitable for measuring flow rates in 50 NB & above pipeline. Available in a variety of materials, carrier rings, impulse piping and rotameter as flow indicator.

1. ACRYLIC BODY / GLASS TUBE ROTAMETERS

FLUID	: Liquid & Gases
BODY	: Acrylic Body - Acrylic / Glass - Borosilicated Tapered
CONNECTION	: Screwed to BSP/NPT (M/F), Flanged to ASA/BS/DIN
RANGES	: 2.5 to 40,000 LPH of Water / Liquid 0.1 to 300 Nm ³ / hr of air.
DENSITY/SP. GRAVITY	: Acrylic Body : 1.85 / Glass Tube : 2.95
VISCOSITY	: Acrylic Body : 100 CP / Glass Tube : 500 CP
LINE SIZE	: Up to 4" NB
WETTED PART	: S.S. 304 / S.S. 316, PVC, Teflon
FLOAT	: S.S. 304 / S.S. 316, PVC, Teflon, PP
ACCURACY	: ± 2% of FSD
TEMPERATURE	: Acrylic - 50°C / Glass Tube - 250°C
FITTING	: Top / Bottom / Rear
AVAILABLE MATERIAL	: MS / CS / S.S. 304 / S.S. 316 / S.S. 316L / PTFE

2. BYE PASS ROTAMETERS

CONNECTION	: Screwed with Valve / Flanges ASA / BS / DIN
RANGES	: 22 to 300 M ³ / hr of Water / Liquid 0.1 to 800 Nm ³ / hr of air / Gas NTP
LINE SIZE	: 50 NB to 450 NB
ACCURACY	: ± 2% of FSD
TEMPERATURE	: Up to 350°C
AVAILABLE MATERIAL	: MS / CS / S.S. 304 / S.S. 316 / Monel / Hastalloy

3. ACRYLIC BODY MANOMETERS

TYPE	: 'U' TUBE	SINGLE LIMB	INCLINED TUBE
RANGE IN MM	: 50 - 0 - 50	0 - 100	0 - 6
	100 - 0 - 100	0 - 200	0 - 10
	150 - 0 - 150	0 - 300	0 - 15
	200 - 0 - 200	0 - 400	0 - 20
	250 - 0 - 250	0 - 500	0 - 25
	0 - 50		
	0 - 75		
	0 - 100		

4. METALLIC BODY MANOMETERS

'U' TUBE TYPE

'U' Tube type primary standard manometer used for precision measurement of pressure, vacuum, differential pressure, and flow measurement in plants and labs where certain accuracy is required.

AVAILABLE: In wall mounted & stand mounted.

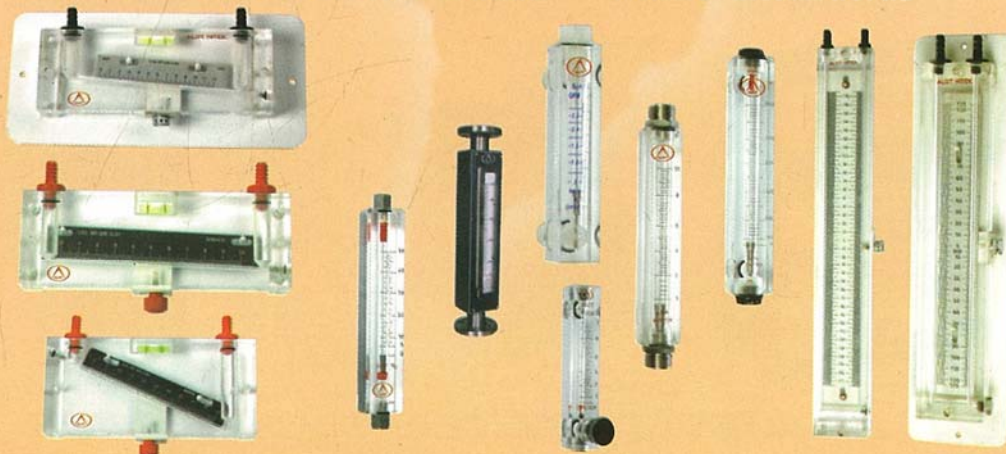
RANGE: 100 - 0 - 100 to 1500 - 0 - 1500 mm WC/HG.

SINGLE LIMB TYPE

Single Limb well type Direct Reading Manometer for the precision measurement of pressure flow and liquid level measurement.

AVAILABLE : In wall mounted & stand mounted.

RANGE: 0 - 2000mm WC / HG



Accessories - AS

"ALOT" Accessories are used to protect the measuring instrument from pressure, Heat, Excessive pulsation and for Isolation

GAUGE SYPHONS

Gauge Syphons are intended to protect the gauge against the effect of hot pressure media

TYPE : 'U' / Ring / Pigtail
CONNECTION : 1/4", 3/8", 1/2" BSP / NPT (M/M, M/F)
MOC : Mild Steel (Chrome Plated), Brass, S.S. 304, S.S. 316

GAUGE COCK

Gauge Cock are intended for isolation to pressure instruments with its design and smooth operation

TYPE : 2 Way / 3 Way
CONNECTION : 1/4", 3/8", 1/2" BSP / NPT (F/F, F/M)
MOC : Brass (Chrome Plated), S.S. 304, S.S. 316

GAUGE SAVER / OVER PRESSURE PROTECTOR

Gauge Saver are intended to protect pressure instrument against over pressure of their desire ratings

WORKING PRESSURE : Up to 7500 PSI
CONNECTION : 1/2" BSP / NPT (F/M)
MOC : S.S. 304 / S.S. 316

PULSATION DAMPENNER (SNUBBER)

Pulsation Dampener (Snubber) are intended to protect pressure instruments from fluctuating pressure and minimize stress for long life and stable measurement

CONNECTION : 1/2" BSP / NPT (F/M)
MATERIAL : Brass / S.S. 304 / S.S. 316

VALVE MANIFOLDS

Valve Manifolds are functionally intended to Control, Measure, Isolate, Equalize, Calibrate, Drain, Vent or Differentiate the pressure of liquide & gases. Valve Manifolds are available in 2, 3 & 5 Valve configurations.

THERMOWELLS

Thermowells are intended to use as a pocket for temperature instruments and sensors to protect against direct contact with chemical and other fluids. Thermowells are available in Standard Threaded, Threaded Heavy Duty, Limited Space, Standard Flange, Heavy Duty Flange, Socket Weld, Weld-In Thermowells.

MOC : S.S. 304/S.S. 316L/Hastelloy/Tantalum/Monel 400 Specific Alloys for specific Application on request

APPLICATION :

Petro Chemical, Oil Exploration, Fertilizer Industry, Pharmaceutical, Production Papermills, Power Generation, Hydraulic, Food and Beverage Industry, Water Treatment Plant, Offshore, Ship Building etc.



www.alothitek.com



A
C
C
E
S
S
O
R
I
E
S

ALOT



ALOT HITEK PVT. LTD.
www.alothitek.com